

The ATMEL/51 Experimenter's Board PCB is a complete prototyping platform for the AT89c51/52/8252, AT89S51/51/8252 (8051) family of 40-pin microcontrollers. It includes four I/O ports where you can connect External Add-ons via these ports.

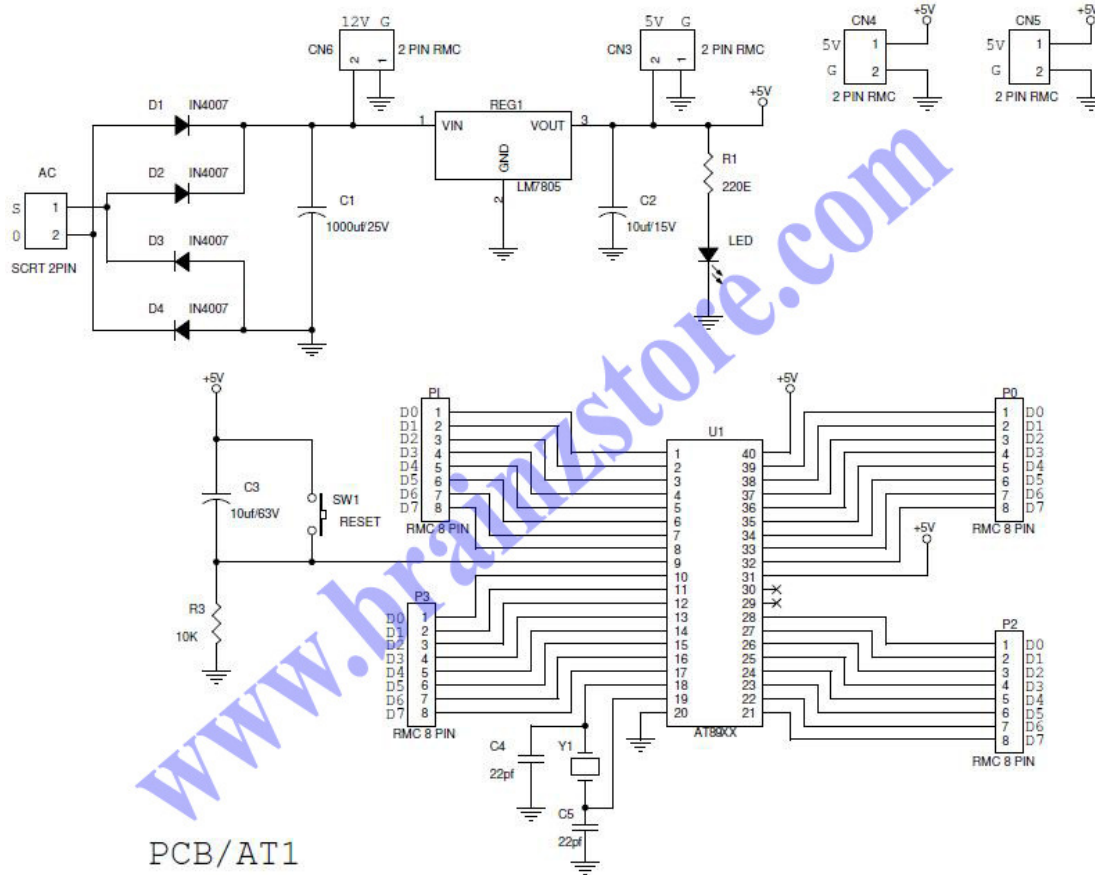
This Assembled PCB includes

- External Step Down Transformer
- Bridge Rectifier
- Regulator 7805
- Reset
- Bug strip for I/O ports (4 ports) P0-P3
- Power LED indication
- 12MHZ Xtal
- Single Layer PCB with legend
- 5082/V2 Standard connector for Transformer input

Dimension:

9 * 7 cm

Circuit:



Components:

Diode: D1-D4 ----- IN4001/7

Resistor: R1 ----- 220E

R3 ----- 10K

Capacitor:

C1 ----- 1000MFD/25V

C2 ----- 1MFD/15V (optional)

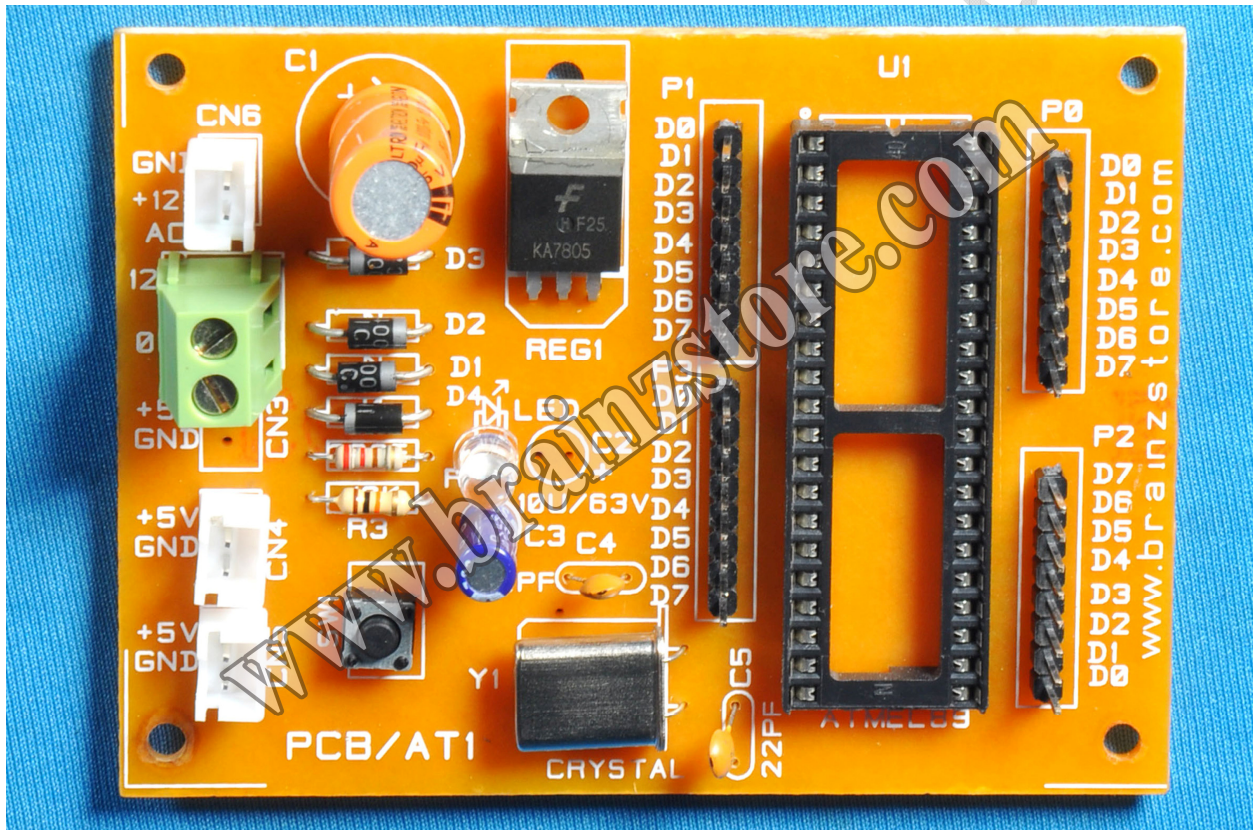
C3 ----- 10MFD/63V

C4&C5 ----- 22pf

Xtal: Y1 ----- 6MHZ -24MHZ

IC	U1	-----	AT89C51/52/8252 , AT89s51/52/8252
Regulator:	Reg1	-----	7805
Reset:	SW1	-----	2 pin Reset switch
LED		-----	5mm LED
Output:	P0-p3	-----	8*4 bug stick

Caution: 12V AC input should be given only via step down transformer



Fully Assembled